

Users restricted to  
18 years of age or older  
使用年齡對象18歲以上

# 電動手槍

AUTO ELECTRIC GUN

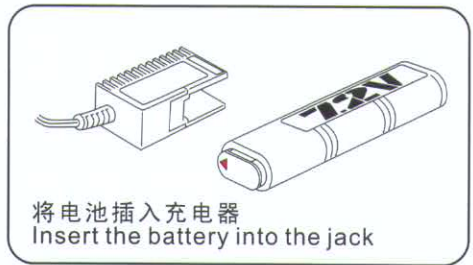
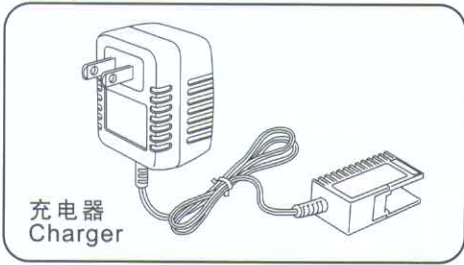
# CM.121



《完成品》

在操作之前必须阅读这些说明书  
Always read through this manual before operation.

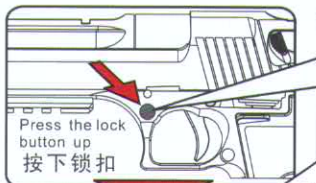
 <b>警告 WARNING</b>	
 18岁以上年龄才能使用 Only for 18 years of age or older	18岁以上年龄才能利用这支汽枪比赛使用 Operation of this air gun for competition use is restricted to users of 18 years of age or older.
 注意受损伤 Injury caution	因为BB 弹能达到 50-60 米范围, 不小心的射击将可能导致眼睛受损伤或其它伤害。 Since plastic BB bullets reach so to 60 meters, careless shooting may cause eye damage or other injuries.
 注意熟读警告指示手册 Careful reading of Handling cautions and Instruction manual	在操作之前要细心读熟警告手册和指示手册操作汽枪时必须认识好警告指示 Always read through this HANDLING CAUTIONS AND INSTRUCTION MANUAL carefully before operation. Operate the air gun with full recognition of warnings and cautions.



1.各部分名称 NAME OF EACH PART



2.保险销 SAFETY



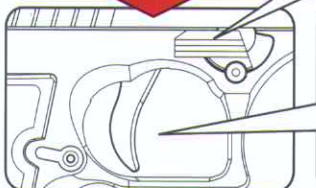
- KEEP THE SAFETY AT "SAFE POSITION" WHEN THE GUN IS UNUSED.

当枪是不用的时候，请把保险拨到“SAFE POSITION”位置

安全位置  
SAFE POSITION



射击位置  
SHOT POSITION



- USE THE FIRST FINGER TO PULL THE TRIGGER 用食指扳动扳机  
NEVER PUT THE FINGER ON THE TRIGGER BEFORE SHOOTING  
射击前切勿将手指放在扳机上

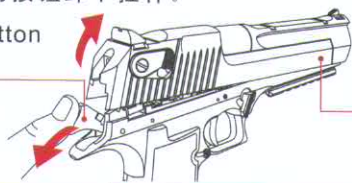




### 3. 充电池 ACCUMULATOR

- ① Press the button at the end of the handle to disassemble the handle.  
用拇指压住拉杆尾端的按钮卸下拉杆。

cocking lever release button  
拉手拆卸钮



cocking lever  
拉手

- ② Install the battery in the battery case.  
将电池装入电池座

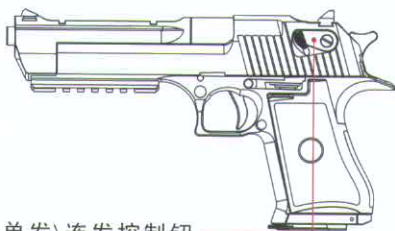


电池的正确插入方向  
Exactitude insert direction of the battery

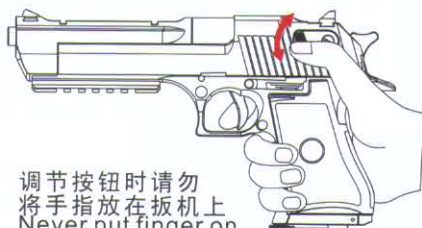
- ③ Then cover the gun body.  
再将拉手盖上



### 4. 单发\连发 SINGLE\RUNNING SHOOT

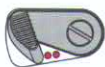


单发\连发控制钮  
Running\single shot control button



调节按钮时请勿  
将手指放在扳机上  
Never put finger on  
the trigger when adjust the button

Single shoot  
position<●>  
单发位置



Single shoot: the button point upward,  
one bullet shoot out one time.  
单发: 将按钮拨向单发位置,  
射击时每次只发一弹。

Running shoot  
position<●●>  
连发位置



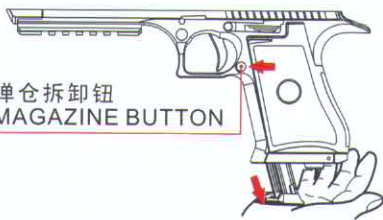
Running shoot: the button point downward,  
more bullets shoot out one time.  
连发: 将按钮拨向连发位置,  
射击时可连续发射多弹。

# 5. 安装\拆卸弹仓

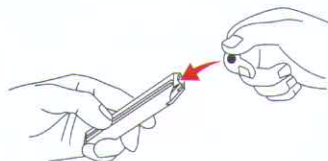
# INSTALL DISASSEMBLE THE MAGAZINE

- 1 PRESS THE MAGAZINE RELEASE BUTTON TO RELEASE THE MAGAZINE.  
按住弹仓拆卸钮拆卸弹仓。

弹仓拆卸钮  
MAGAZINE BUTTON

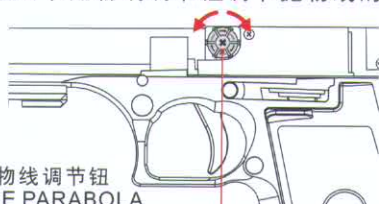


- 2 LOAD 6MM BB BULLETS INTO THE MAGAZINE.  
装入6MM BB弹。

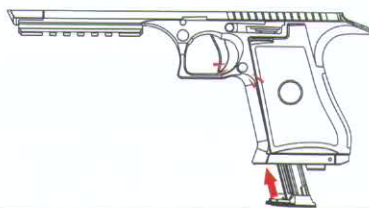


- Adjust the parabola regulate button to adjust the direction of the parabola.  
通过调节抛物线调节钮调节抛物线的方向。

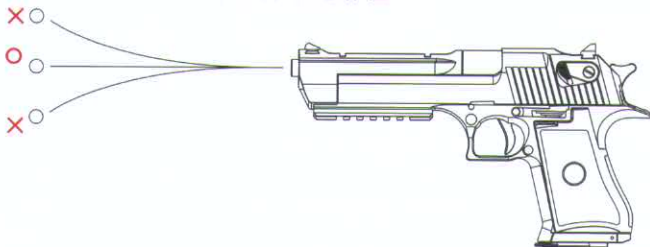
抛物线调节钮  
THE PARABOLA  
REGULATE BUTTON



- 3 PUSH THE MAGAZINE INTO THE GUN TILL A CLICK SOUND HEARD.  
将弹仓推入枪身直至听到“喀嚓”一声。



- The best position is where the bullets fly horizontally, and the longest range is obtained.  
保持水平方向的射击能够使BB弹获得最远射程。



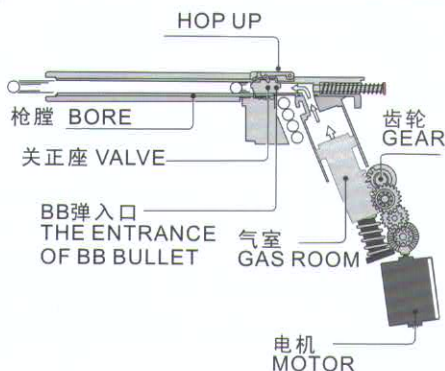
CAUTION 注意 WARNING 警告

- Our company will not be responsible for trouble caused by using the bullet produced by other company.  
我公司不对使用其它公司BB弹产品而引起的事故负责。
- The bunglesome bb bullet is damage with the gun. Please use the precision bb bullet of our company.  
拙劣的BB弹会对枪支造成严重损害，请使用我公司的标准BB弹系列产品。

Precision BB bullet

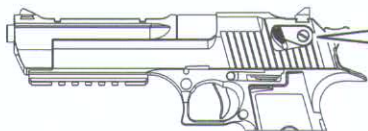


Clumsy BB bullet



## 6. 射击 SHOT

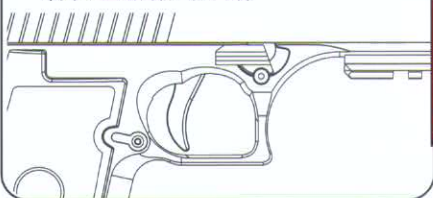
- ① DIAL THE POINTER TO THE RUNNING/SINGLE SHOT POSITION  
将调节钮拨到连发/单发位置



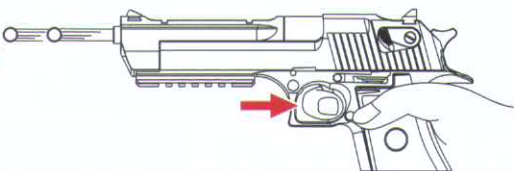
SINGLE SHOT : RUNNING SHOT  
单发射击 : 连发射击



- ② PUSH THE SAFETY TO THE TOP  
将安全销推到上端

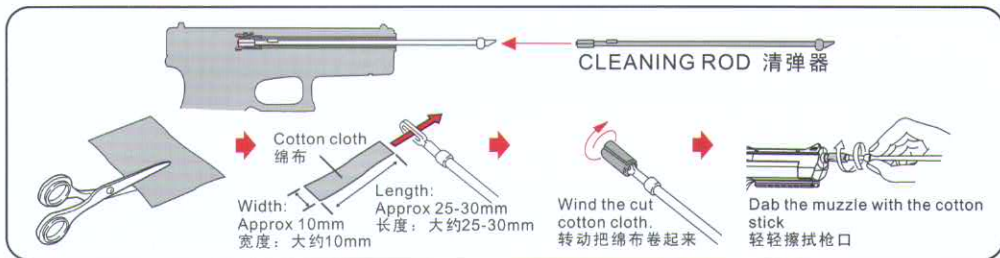


- ③ PULL THE TRIGGER TO SHOT  
扣动扳机射击



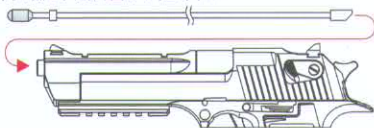
## 7. 清除阻塞BB弹 REMOVE CLOGGED BULLETS

1. 清通枪膛 CLEAN THE BORE



2. 清除阻塞BB弹 REMOVE CLOGGED BULLETS

- ② WILL CLEANING ROD TO INSERT A GUN TUBE  
将清弹器插入枪管。



- ③ REMOVE THE CLOGGED BULLETS.  
清除阻塞的BB弹。



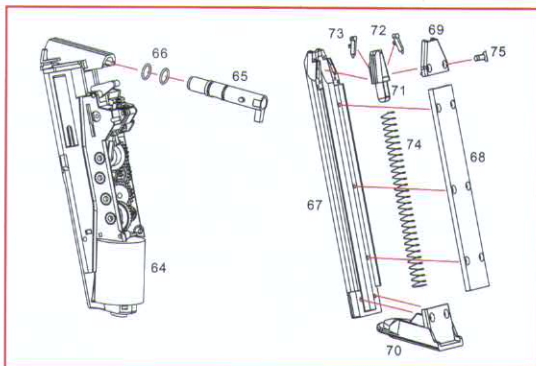
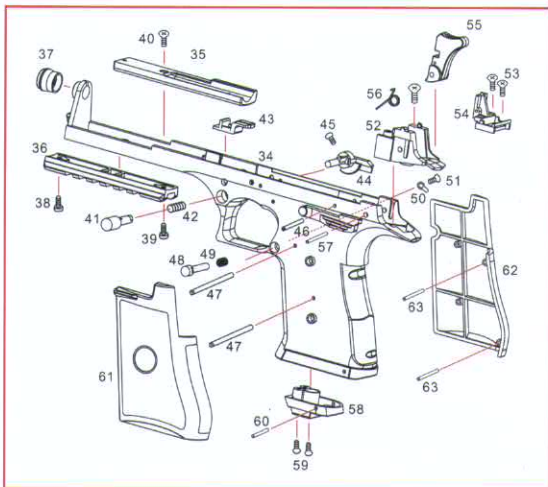
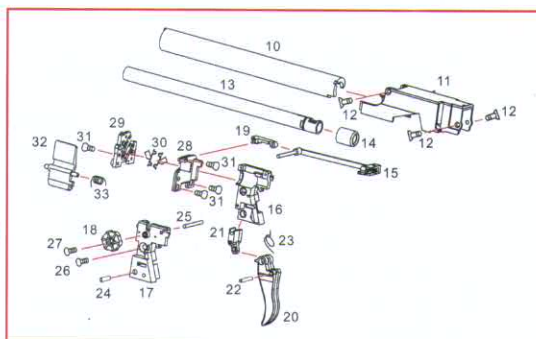
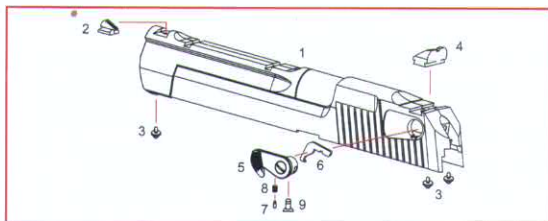
3. 电机的微调 ELECTRICAL ENGINEERING OF TINY ADJUST

ONLY WHEN THE MOTOR NOISE BECOMES HIGH AFTER OPERATIONS FOR A LONG PERIOD OF TIME, CONDUCT THE FINE ADJUSTMENT AS SHOWN.  
若使用时间过长, 电机发出很大的噪音时, 请按如图所示对电机进行微调。





# ● THE COMPOSITION OF CM.121



- |   |                                      |
|---|--------------------------------------|
| 1. Puller                               | 拉手                                   |
| 2. Front sight                          | 前准星                                  |
| 3. $\varnothing 2 \times 4$ PWBHO D=5.5 | $\varnothing 2 \times 4$ PWBHO D=5.5 |
| 4. Rear sight                           | 后准星                                  |
| 5. Outo-semi changer                    | 单连发转换件                               |
| 6. Auto shooting block                  | 连发限位件                                |
| 7. Semi shooting block                  | 单连发限位粒                               |
| 8. Spring                               | 压簧                                   |
| 9. M2×6 KMHO                            | M2×6 KMHO                            |
| 10. Barral cover                        | 枪管盖                                  |
| 11. Hop-up cover                        | 过只罩                                  |
| 12. M2×6 KMHO                           | M2×6 KMHO                            |
| 13. Inner barral                        | 枪内管                                  |
| 14. Hop-up rubber                       | 过只橡胶                                 |
| 15. Cock lever                          | 拉杆                                   |
| 16. Right hop-up base                   | 右过只座                                 |
| 17. Left hop-up bas                     | 左过只座                                 |
| 18. Hop-up adjust button                | Hop Up调节钮                            |
| 19. Hop-up adjust                       | 过只调节件                                |
| 20. Trigger                             | 扳机                                   |
| 21. Driver                              | 传动件                                  |
| 22. $\varnothing 2 \times 9$ shaft      | $\varnothing 2 \times 9$ 光轴          |
| 23. Trigger spring                      | 扳机扭簧                                 |
| 24. Copper                              | 铜套                                   |
| 25. $\varnothing 1.5 \times 12.5$ shaft | $\varnothing 1.5 \times 12.5$ 铁轴     |
| 26. M3×12 KMHO                          | M3×12 KMHO                           |
| 27. M2×5 KMHO                           | M2×5 KMHO                            |
| 28. Battery base                        | 电池底座                                 |
| 29. Battery cover                       | 电池座盖                                 |
| 30. Battery base copper slice           | 电池座铜片                                |
| 31. $\varnothing 2 \times 5$ KBHO       | $\varnothing 2 \times 5$ KBHO        |
| 32. Battery release                     | 电池卸件                                 |
| 33. Battery release spring              | 电池卸件扭簧                               |
| 34. Gun body                            | 主体                                   |
| 35. Additional weight metal slice       | 加重块                                  |
| 36. Rail                                | 鱼骨                                   |
| 37. Gun tip                             | 枪头                                   |
| 38. M3×12 PMHO inner-hexangular         | M3×12 PMHO内六角                        |

- |  |   |
|--|---|
| 39. M3×6 PMHO inner-hexangular   | M3×6 PMHO内六角  |
| 40. $\varnothing 3 \times 7$ KBHO  | $\varnothing 3 \times 7$ KBHO                                       |
| 41. Safety button  | 保险按键  |
| 42. Spring ( $\varnothing 0.5 \times \varnothing 6.2 \times 17 \times 12T$ ) | 压簧( $\varnothing 0.5 \times \varnothing 6.2 \times 17 \times 12T$ ) |
| 43. Safety   | 保险件   |
| 44. Safety selector  | 保险拔件  |
| 45. $\varnothing 2.3 \times 5$ PBHO  | $\varnothing 2.3 \times 5$ PBHO                                     |
| 46. $\varnothing 2 \times 27$ shaft  | $\varnothing 2 \times 27$ 花轴  |
| 47. $\varnothing 2 \times 26$ shaft  | $\varnothing 2 \times 26$ 花轴  |
| 48. Magazine safety button   | 弹盒保险按键  |
| 49. Spring ( $\varnothing 0.5 \times \varnothing 5.3 \times 6 \times 4T$ )   | 压簧( $\varnothing 0.5 \times \varnothing 5.3 \times 6 \times 4T$ )   |
| 50. Safety block   | 保险卡件  |
| 51. $\varnothing 2 \times 6$ KAHO  | $\varnothing 2 \times 6$ KAHO                                       |
| 52. Gun body rear base   | 主体后座  |
| 53. $\varnothing 3 \times 7$ KBHO  | $\varnothing 3 \times 7$ KBHO                                       |
| 54. Loading rear base  | 膛后座   |
| 55. Gun body release button  | 击锤  |
| 56. Spring ( $\varnothing 0.8 \times \varnothing 6.0 \times 3T$ )            | 扭簧( $\varnothing 0.8 \times \varnothing 6.0 \times 3T$ )            |
| 57. $\varnothing 3 \times 27$ shaft  | $\varnothing 3 \times 27$ 光轴  |
| 58. Hand grip down cover   | 手把下盖  |
| 59. M2×6 PMHO  | M2×6 PMHO   |
| 60. $\varnothing 2 \times 28$ shaft  | $\varnothing 2 \times 28$ 花轴  |
| 61. Left grip cover  | 左贴片   |
| 62. Right grip cover   | 右贴片   |
| 63. $\varnothing 2 \times 11.5$ shaft  | $\varnothing 2 \times 11.5$ 单花轴                                     |
| 64. Gear box   | 保箱  |
| 65. Loading sets   | 上膛套件  |
| 66. O type ring  | 膺套O型圈   |
| 67. Magazine main body   | 弹盒主体  |
| 68. Magazine coner   | 弹盒盖   |
| 69. Magazine blocked cover   | 弹盒阻盖  |
| 70. Magazine base  | 弹盒座   |
| 71. Bullets lifting tip  | 开弹头   |
| 72. Right block  | 右咀卡件  |
| 73. Left block   | 左咀卡件  |
| 74. Spring   | 扁压簧   |
| 75. M2×6 KMHO  | M2×6 KMHO   |