

電動氣彈槍

FULL SEMIAUTO

CM.122

請仔細閱讀說明書

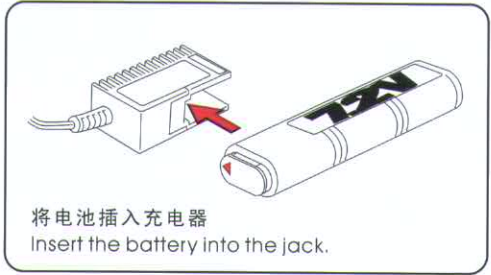
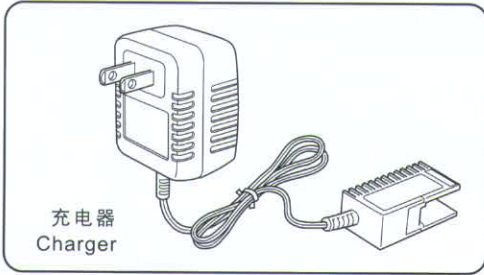


在操作之前必需讀熟這些說明書
Always read through this manual before operation.

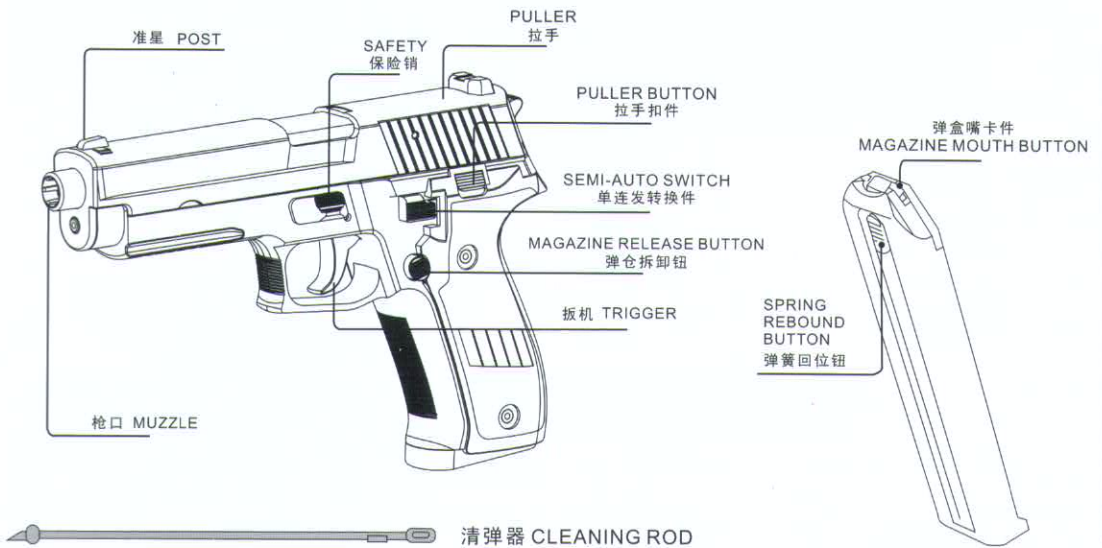
 警告 WARNING		
	<p>18岁以上年齡才能使用 Only for 18 years of age or older</p>	<p>18岁以上年齡才能利用這支汽槍比賽使用 Operation of this air gun for competition use is restricted to users of 18years of age or older.</p>
	<p>注意受損傷 Injury caution</p>	<p>因為BB 彈能達到50-60米範圍，不小心的射擊將可能導致眼睛受損傷或其它傷害。 Since plastic BB bullets reach 50 to 60 meters, careless shooting may cause eye damage or other injuries.</p>
	<p>注意熟讀警告指示手冊 Careful reading of Handling cautions and instruction manual</p>	<p>在操作之前要細心讀熟警告手冊和指示手冊操作汽槍時必須認識好警告指示 Always read through this HANDLING CAUTION AND INSTRUCTION MANUAL carefully before operation. Operate the air gun with full recognition of warnings and cautions.</p>

FOR AGES:18 AND UP

电池与充电器 ACCUMULATOR AND CHARGER



1 各部件名称 NAME OF EACH PARTS

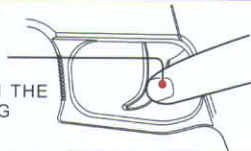


2 保险销 SAFETY

● KEEP THE SAFETY AT "SAFE POSITION" WHEN THE GUN IS UNUSED.

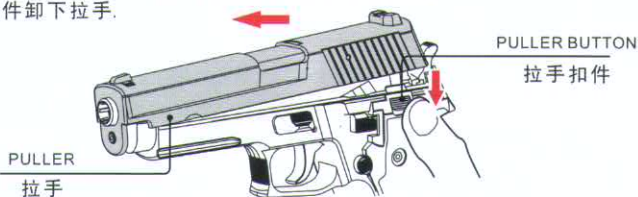


● USE THE FIRST FINGER TO PULL THE TRIGGER
用食指扳动扳机
NEVER PUT THE FINGER ON THE TRIGGER BEFORE SHOOTING
射击前切勿将手指放在扳机上。

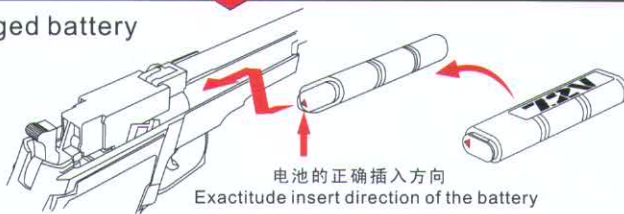


3 装电池 INSTALL THE BATTERY

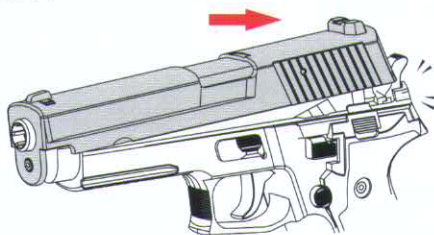
- ① Press the puller button to unload down the puller.
用手指按下拉手扣件卸下拉手。



- ② Load the full-charged battery in to its position.
将充好电的电池装上。



- ③ Fix on the puller reversely to step ①.
将拉手按①反向操作装回拉手。



4 单发\连发 SINGLE \ RUNNING SHOOT



单发\连发控制钮
Running/single shot control button



Never put finger on the trigger when adjust the button
调节按钮时请勿将手指放在扳机上

Single shoot position < ● >

单发位置



Single shoot: the button point upward, one bullet shoot out one time.

单发: 将按钮拨向单发位置, 射击时每次只发一弹

running shoot position < ● ● >

连发位置

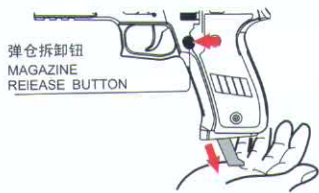


a running shoot: the button point downward, more bullets shoot out one time.

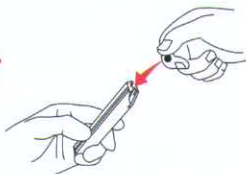
连发: 将按钮拨向连发位置, 射击时可连续发射多弹

5 安装\拆卸弹仓 INSTALL\DISASSEMBLE THE MAGAZINE

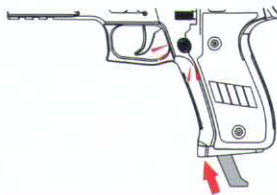
- ① PRESS THE MAGAZINE RELEASE BUTTON TO RELEASE THE MAGAZINE.
按住弹仓拆卸钮拆卸弹仓。



- ② LOAD 6MM BB BULLETS INTO THE MAGAZINE.
装入6MM bb弹。



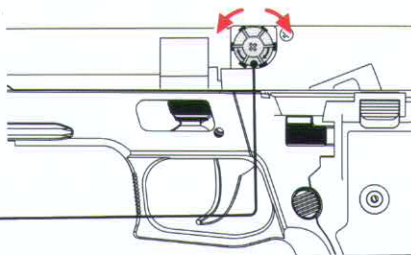
- ③ PUSH THE MAGAZINE INTO THE GUN TILL A CLICK SOUND HEARD.
将弹仓推入枪身直至听到“喀嚓”一声。



- Adjust the parabola direction with HOP-UP.

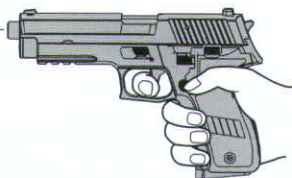
通过调节HOP UP调节钮
调节抛物线的方向

THE PARABOLA
REGULATE BUTTON
抛物线调节钮



- The best position is where the bullets fly horizontally, and the longest range is obtained.

保持水平方向的射击能够使BB弹获得最远射程。



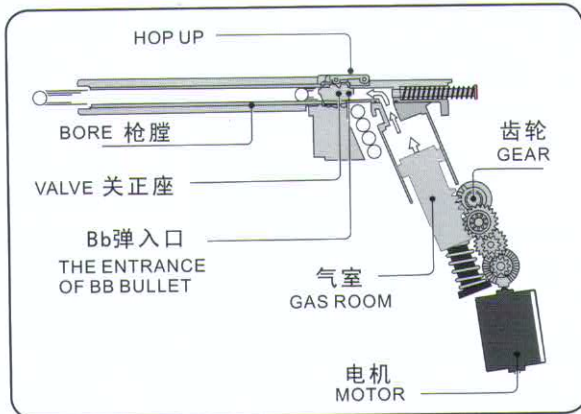
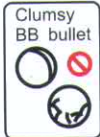
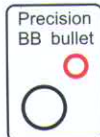
警告·注意

- Our company will not be responsible for trouble caused by using the bullet produced by other company.

我公司不对使用其它公司BB弹产品而引起的事故负责。

- The bunglesome bb bullet is damage with the gun. Please use the precision bb bullet of our company.

拙劣的BB弹会对枪支造成严重损害，请使用我公司的标准BB弹系列产品。



6 射击 SHOT

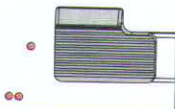
- ① Set semi-auto switch in semi or auto position.

将单连发转换件拨在单发或连发位置。



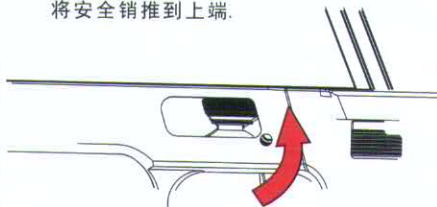
SINGLE SHOT

RINNING SHOT



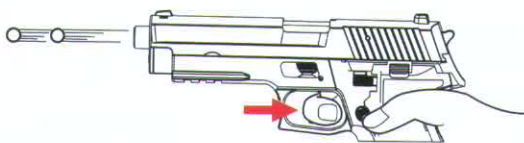
- ② PUSH THE SAFETY TO THE TOP.

将安全销推到上端。



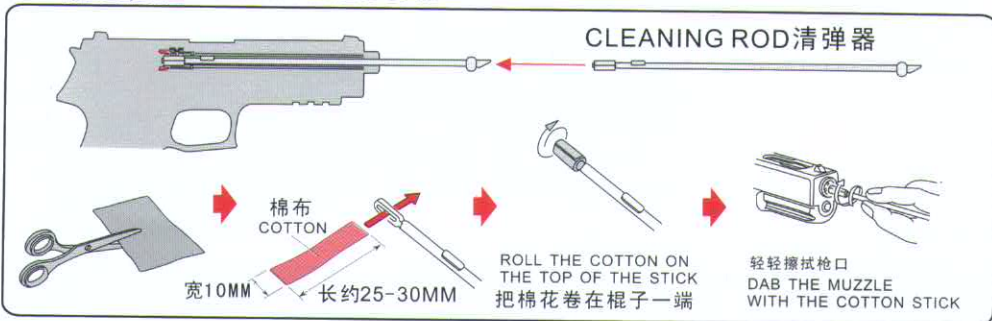
- ③ PULL THE TRIGGER TO SHOT.

扣动扳机射击。



7 清除阻塞BB弹 REMOVE CLOGGED BULLETS

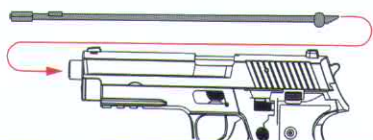
- 1 清通枪膛 CLEAN THE BORE



- 2 清除阻塞BB弹 REMOVE CLOGGED BULLETS

- ① Unload the magazine, insert rod into the barrel as picture showing.

退出弹盒, 将清弹器如图所示沿枪口插入。



- ② REMOVE THE CLOGGED BULLETS.

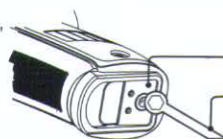
清除阻塞的BB弹。



- 3 电机的微调 ELECTRICAL ENGINEERING OF TINY ADJUST

ONLY WHEN THE MOTOR NOISE BECOMES HIGH AFTER OPERATIONS FOR ALONG PERIOD OF TIME, CONDUCT THE FINE ADJUSTMENT AS SHOWN.

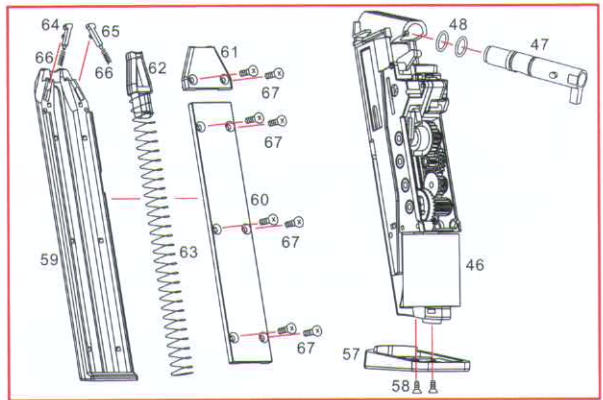
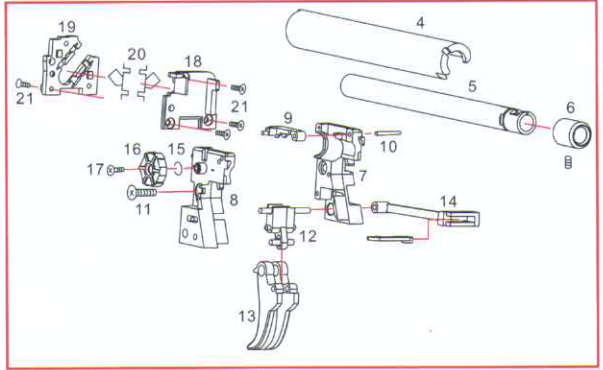
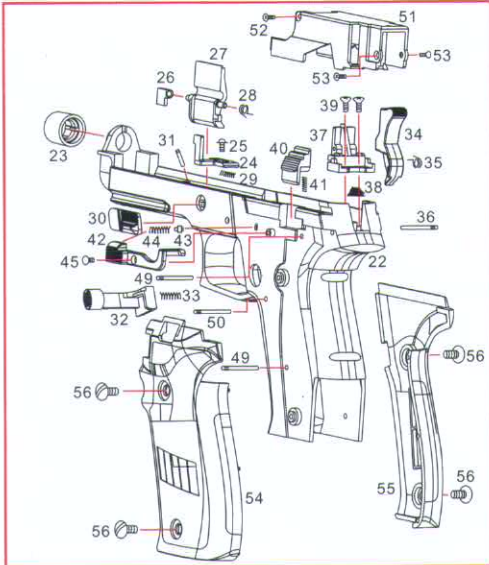
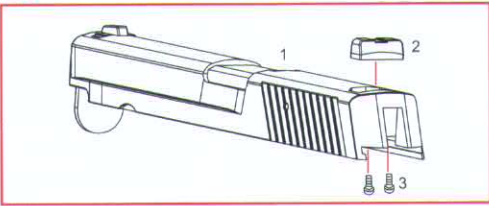
若使用时间过长, 电机发出很大的噪音时, 请按如图所示对电机进行微调。



COVER 盖子

HEXAGON RING SPANNER 内六角扳手

● THE COMPOSITION OF CM.122



1 拉手	Puller	35 击锤扭簧	Spring
2 后准星	Rear sight	36 Ø2X25 花轴	Ø2X25 shaft
3 Ø2X4 PWBHO	Ø2X4 PWBHO	37 膛后座	Loading rear base
4 枪管盖	Barral cover	38 塔形压簧	Spring
5 枪管内管	Inner barral	39 3X10 KBHO	3X10 KBHO
6 橡胶过只	Hop-up rubber	40 拉手扣件	Puller button
7 右过只座	Right hop-up base	41 压簧	Spring
8 左过只座	Left hop-up base	42 单连发转换件	Auto-semi chager
9 过只调节片	Hop-up adjust	43 保险限位粒	Safety localized block
10 Ø1.5X12.5 花轴	Ø1.5X12.5 shaft	44 压簧	Spring
11 M3X10KMHO	M3X10KMHO	45 Ø2X4 PWBHO	Ø2X4 PWBHO
12 拉杆传动件	Sliding handle driver	46 保箱	Gear box
13 扳机	Trigger	47 上膛套件	Loading sets
14 拉杆+离合片	Driving lever+clutch	48 膛套“O”型圈	O type ring
15 Hop up 调节“O”型圈	Hop up “O” type rubber	49 Ø2X29 花轴	Ø2X29 shaft
16 Hop up 调节钮	Hop-up adjust button	50 Ø2X31.5 花轴	Ø2X31.5 shaft
17 M2X5 KMHO	M2X5 KMHO	51 过只罩	Hop-up cover
18 电池座底座	Battery base	52 M2X8 KMHO	M2X8 KMHO
19 电池座盖	Battery cover	53 M2X5 KMHO	M2X5 KMHO
20 电池座铜片	Battery base copper slice	54 左贴片	Left grip cover
21 Ø2X5 KBHO	Ø2X5 KBHO	55 右贴片	Right grip cover
22 主体	Gun body	56 Ø4X4.5 TBHO	Ø4X4.5 TBHO
23 枪头	Gun tip	57 手把下盖	Hand grip down cover
24 保险件	Safety	58 M2X6 KMHO	M2X6 KMHO
25 Ø2.3X5 PWBHO	Ø2.3X5 PWBHO	59 弹盒主体	Magazine main body
26 电池卸座扣件	Unload battery button	60 弹盒盖	Magazine cover
27 电池卸件	Battery release	61 弹盒嘴盖	Magazine mouth cover
28 扭簧	Spring	62 升弹头	Lifting warhead
29 压簧	Spring	63 压簧	Spring
30 保险传动件	Safety driver	64 左嘴卡件	Left block
31 Ø1.5X10 花轴	Ø1.5X10 shaft	65 右嘴卡件	Right block
32 弹匣按键	Magazine button	66 压簧	Spring
33 压簧	Spring	67 M2X5 KMHO	M2X5 KMHO
34 击锤	Gun body release button		